



# The Alliance Protecting the Irreplaceable™

ALABAMA PRESERVATION ALLIANCE

ESTABLISHED 1987

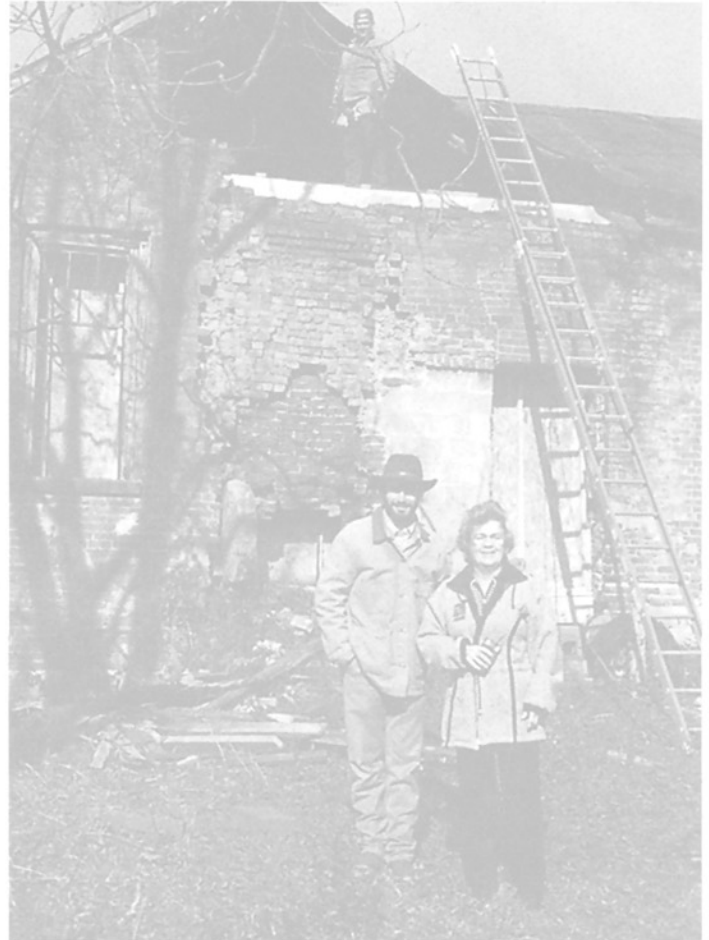
WINTER 2000/No. 29

## Critical Response Fund Put Into Action

**T**wo projects have recently benefited from the inaugural activation of the Alabama Preservation Alliance's Critical Response Fund (CRF). Funded from the Alabama Historical Commission and other sources, this fund stands ready to provide emergency financial assistance to critical situations.

The first CRF project was the emergency stabilization of the circa 1830 **Copeland House** in Blount County. Following the 1998 collapse of the nearby Nation House, the Copeland House is the last standing pre-Civil War brick house in Blount County. Compromised by the elements and abandonment, the Blountsville Historical Society is desperately trying to preserve this significant structure. Without stabilization and the upcoming freeze-thaw cycle, the building's walls would have collapsed. The emergency stabilization work was provided by Ben, Barbara, and Robert Wilson of B & W Construction to prevent further deterioration. Metal tie-rods were installed to stabilize the masonry walls, the roof was repaired and temporary support walls were installed. (The Wilsons have also restored their personal residence in Courtland and are experienced in masonry stabilization.) Hopefully, the Blountsville Historical Society will be able to further this stabilization and restoration in the near future. President Marie Gray said "We are grateful for the APA's assistance."

The second beneficiary of the CRF is a feasibility study for the **Pinson Rock School**, listed on the current Places in Peril List (see page 10). The Alliance has worked with the school board and the local Turkey Creek Historical Society to arrange the feasibility study to be conducted by **Hendon and Huckestein** Architects of Birmingham. APA Executive Director Brandon Brazil has met repeatedly with the Jefferson County School Board, and they have allowed the APA and the CRF to conduct this study.



*APA Executive Director Brandon Brazil, Marie Gray, and Robert Wilson (on roof) shown at the Copeland House.*



*An early rendering of how the historic Pinson School can be reused with the new building addition massed to the rear.*

### IN THIS ISSUE

Critical Response Fund .....	1
Director's Message, President's Letter .....	2
Transitions, Annual Fund Campaign .....	3
Annual Meeting, Board Members Emeritus, Book Review .....	4
Federal Legislative Matters .....	5
Around the State .....	6
Policy on Moved Buildings .....	9
Places in Peril .....	10
New Members, Join APA, Mark Your Calendar .....	14